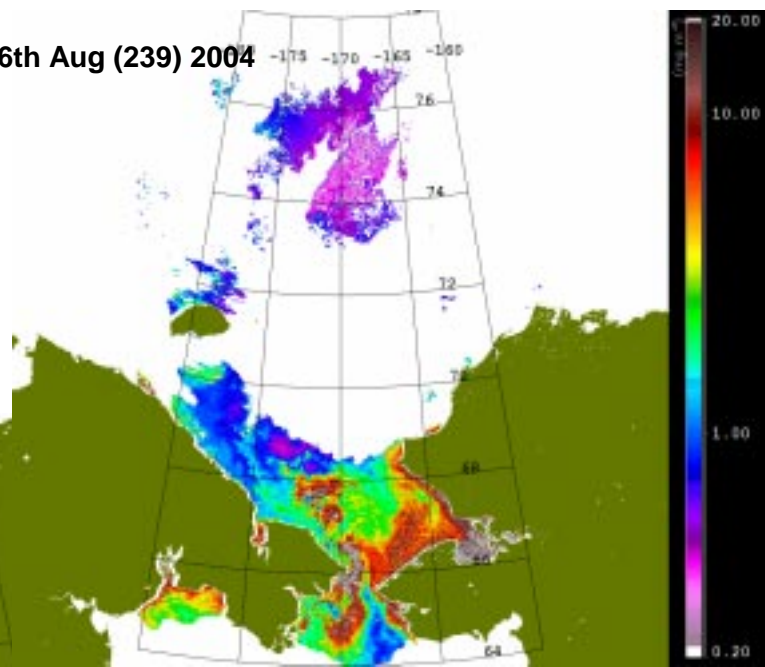


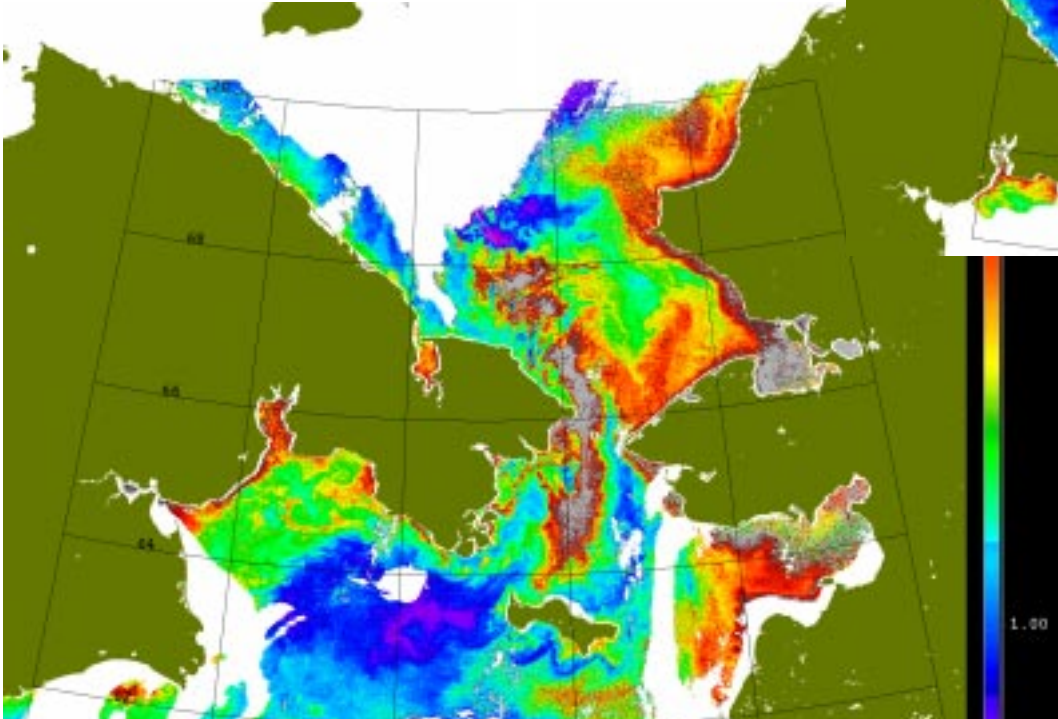
**APPENDIX C - SEAWIFS images  
Bering Strait Aug/Sept 2004**

from:  
[http://halibut.ims.uaf.edu:8000/~mschmidt/ims\\_summary.html](http://halibut.ims.uaf.edu:8000/~mschmidt/ims_summary.html)

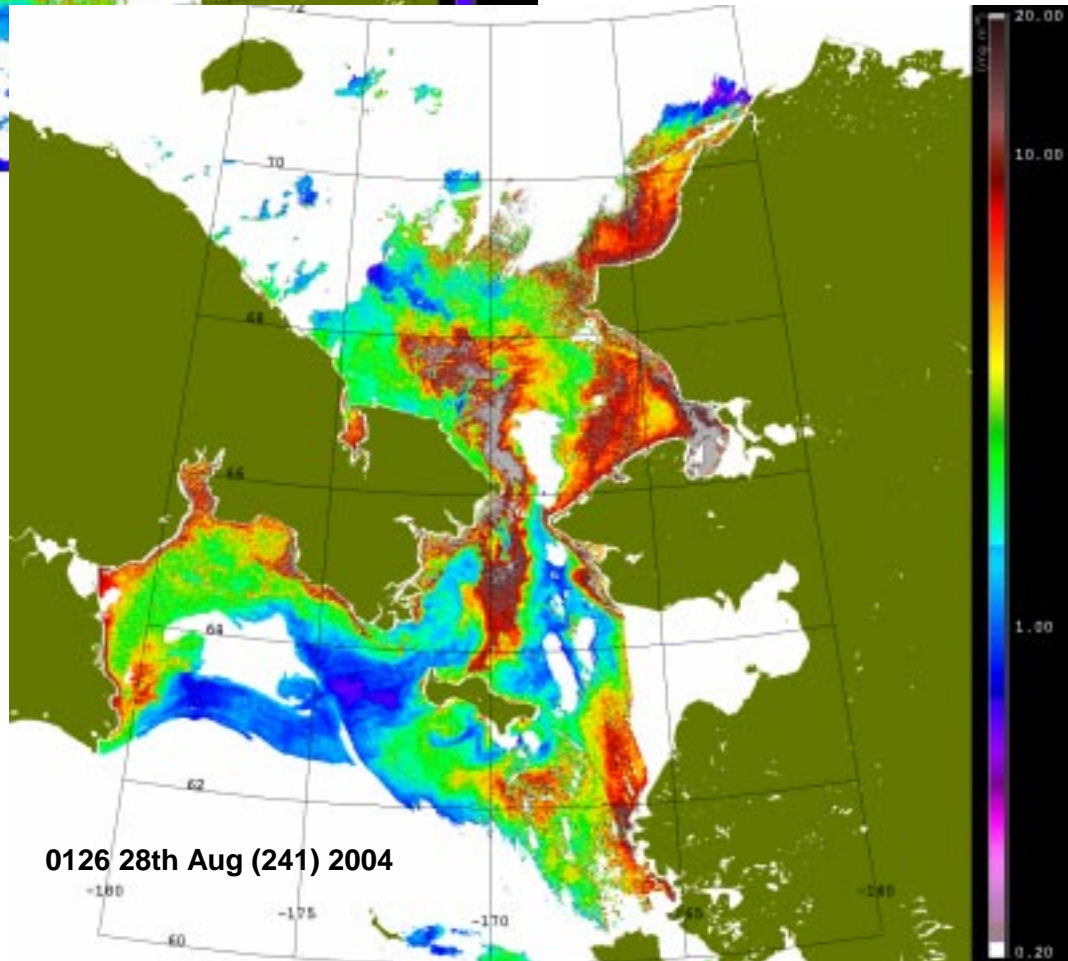
**0004 26th Aug (239) 2004**



SEAWIFS ocean colour Chlor\_a  
(mapped) in mg/m<sup>3</sup>



**0045 27th Aug (240) 2004**



**0126 28th Aug (241) 2004**

SeaWiFS images obtained from:  
Ocean Color Data Processing Archive  
NASA/Goddard Space Flight Center  
Greenbelt, MD  
USA  
with thanks to  
Mike Schmidt for acquisition

SeaWiFS images are for educational and  
research use. Commercial use of Sea-  
WiFS images should be coordinated with  
ORBIMAGE

WOODGATE: HX290  
August/September 2004