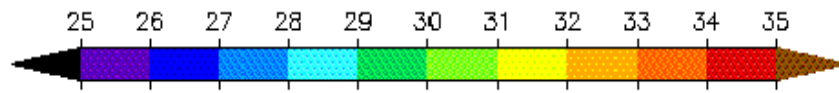




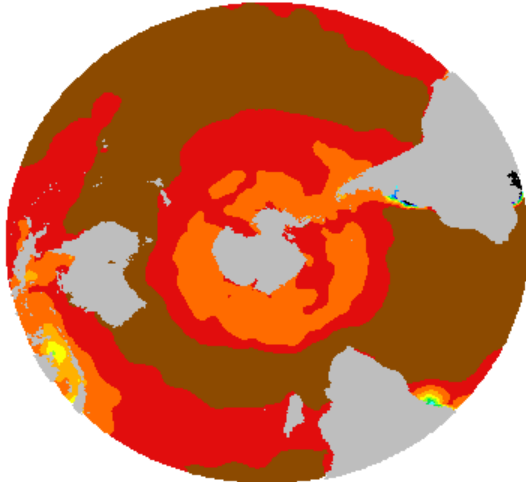
M. Steele & W. Ermold

<http://psc.apl.washington.edu/Climatology.html>

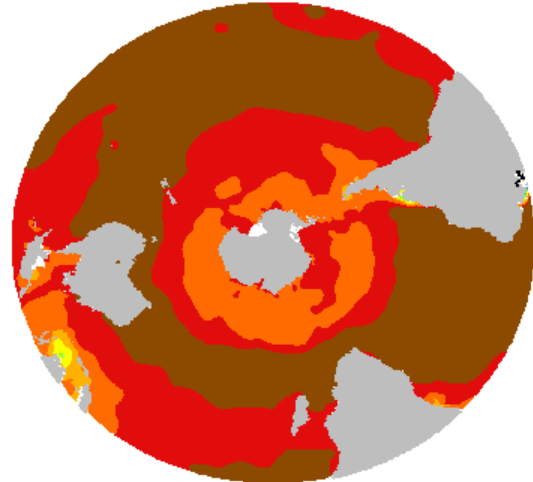
PHC 2.1 Winter Salinity



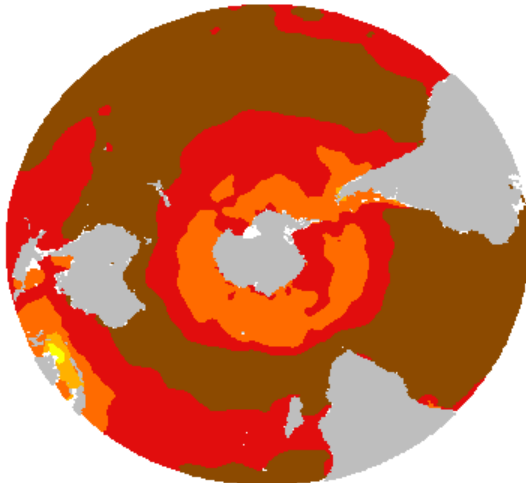
0 m



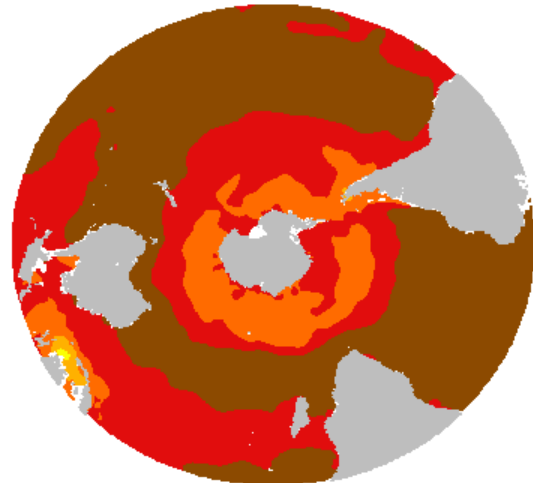
10 m



20 m



30 m

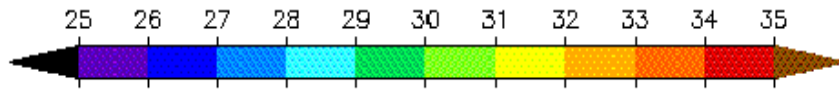




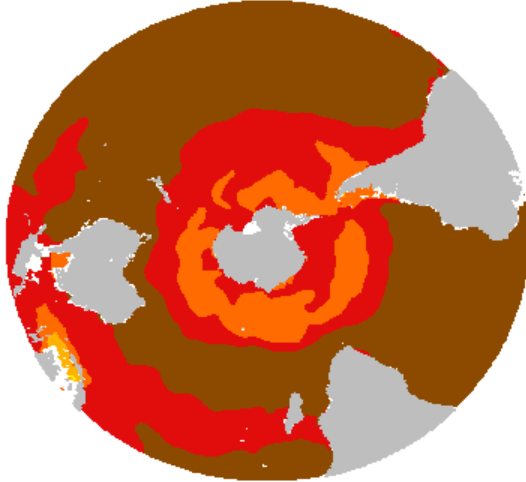
M. Steele & W. Ermold

<http://psc.apl.washington.edu/Climatology.html>

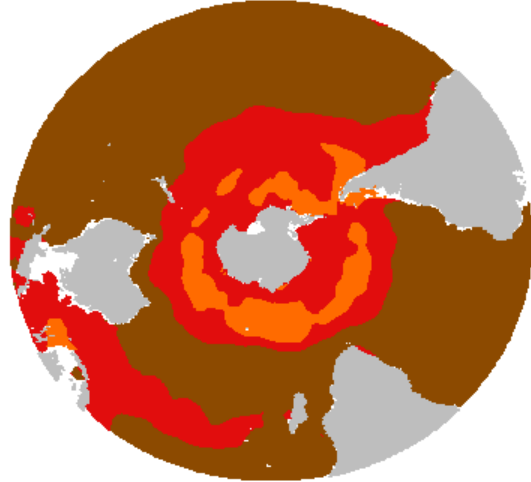
PHC 2.1 Winter Salinity



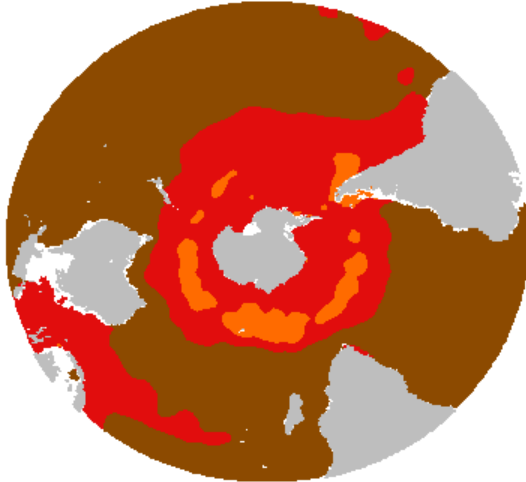
50 m



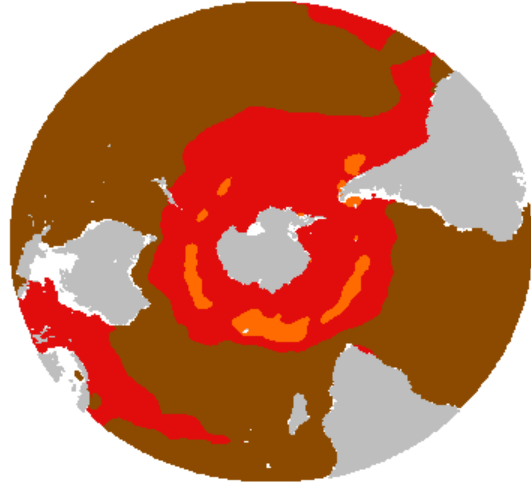
75 m



100 m



125 m





M. Steele & W. Ermold

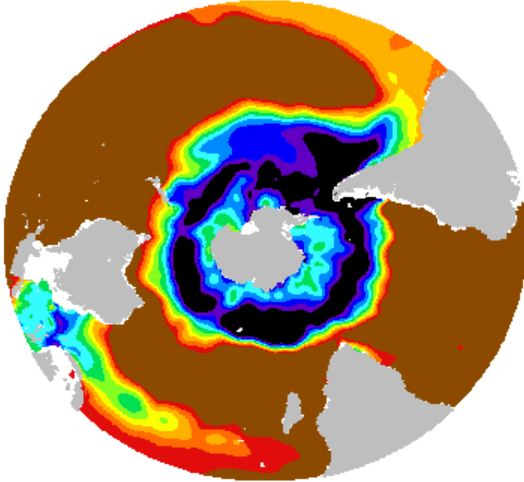
<http://psc.apl.washington.edu/Climatology.html>

PHC 2.1 Winter Salinity

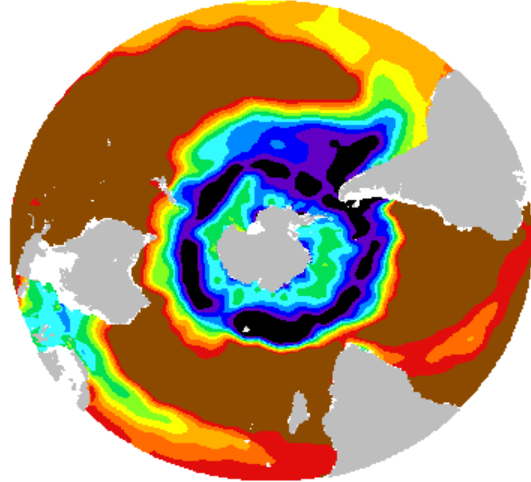
34.2 34.3 34.4 34.5 34.6 34.7 34.8 34.9 35.0 35.1 35.2



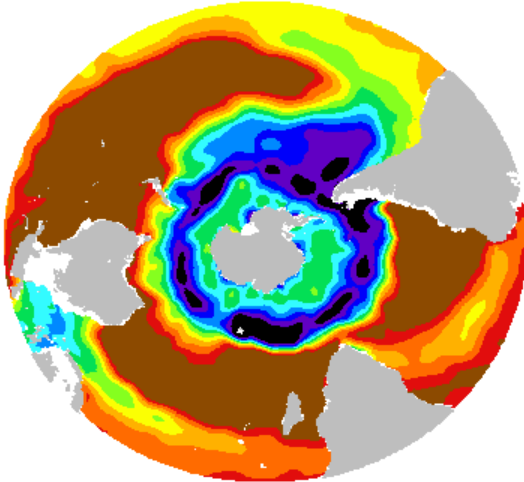
150 m



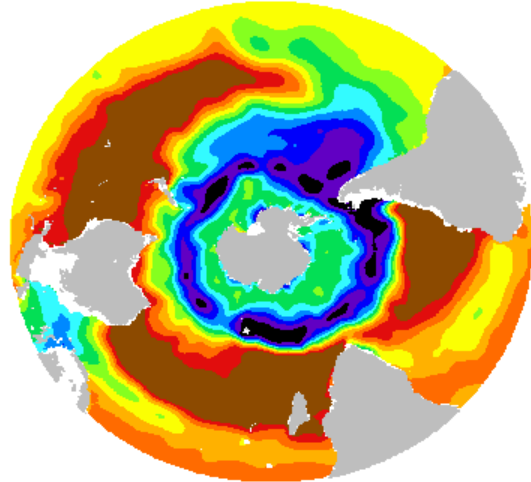
200 m



250 m



300 m

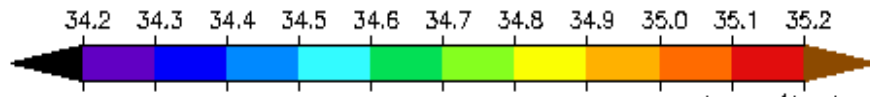




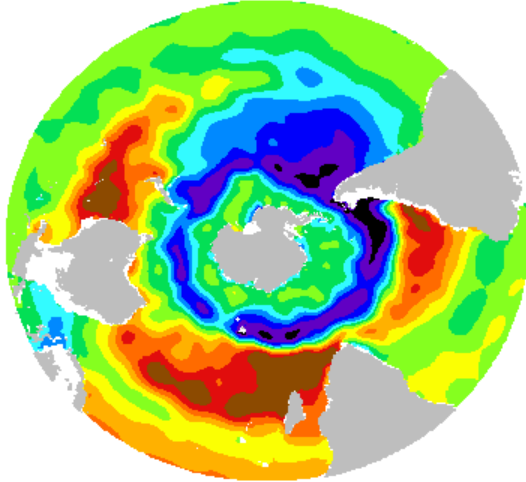
M. Steele & W. Ermold

<http://psc.apl.washington.edu/Climatology.html>

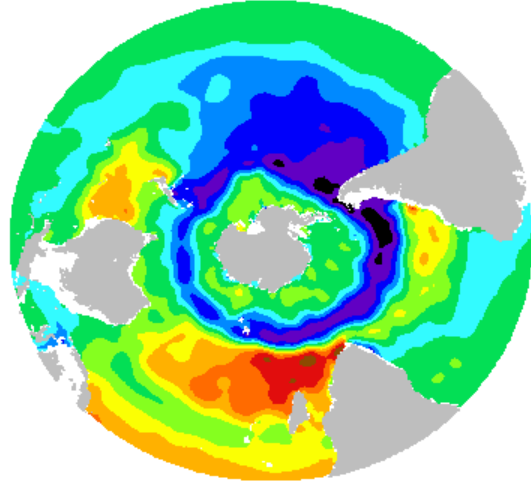
PHC 2.1 Winter Salinity



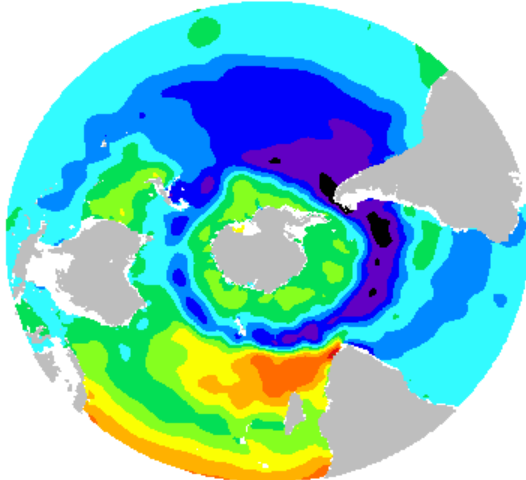
400 m



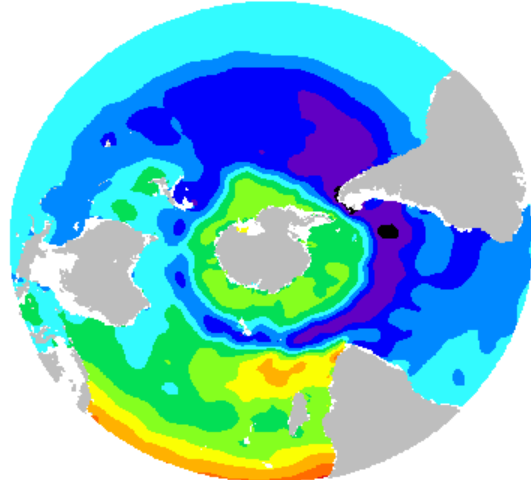
500 m



600 m



700 m





M. Steele & W. Ermold

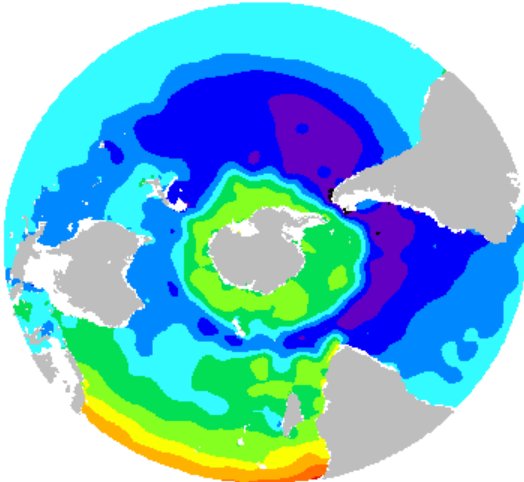
<http://psc.apl.washington.edu/Climatology.html>

PHC 2.1 Winter Salinity

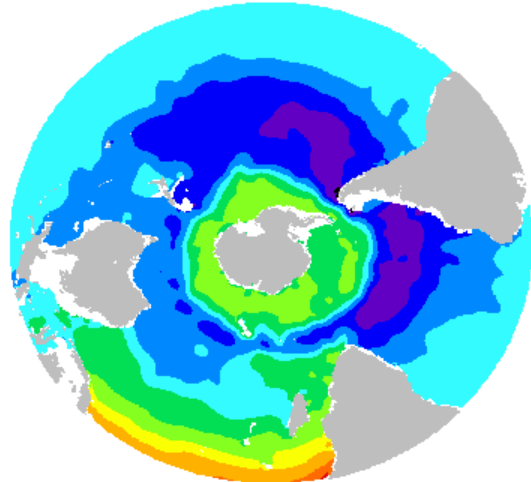
34.2 34.3 34.4 34.5 34.6 34.7 34.8 34.9 35.0 35.1 35.2



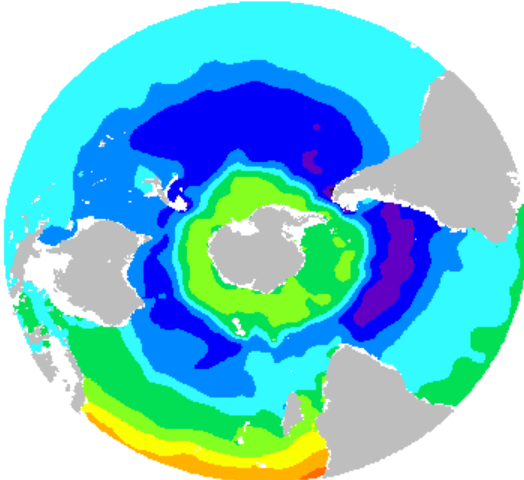
800 m



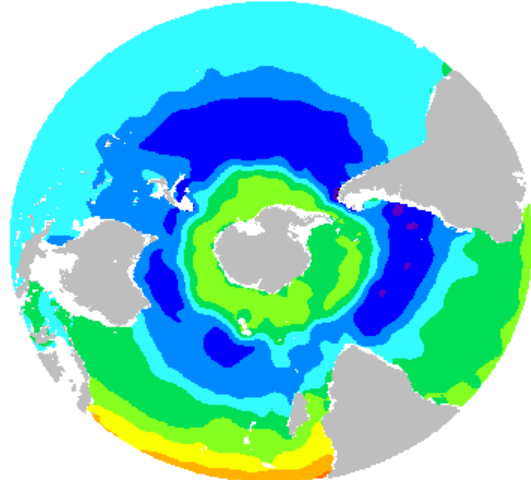
900 m



1000 m



1100 m





M. Steele & W. Ermold

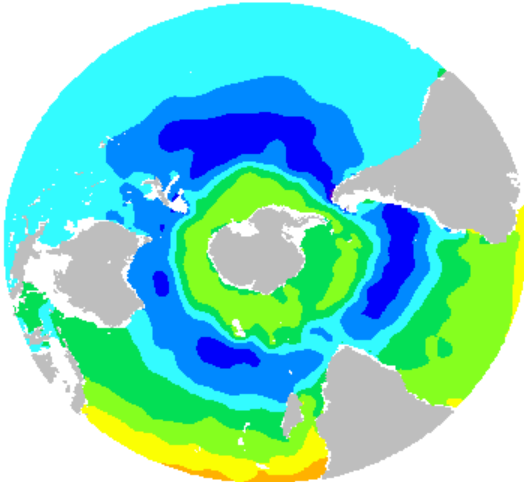
<http://psc.apl.washington.edu/Climatology.html>

PHC 2.1 Winter Salinity

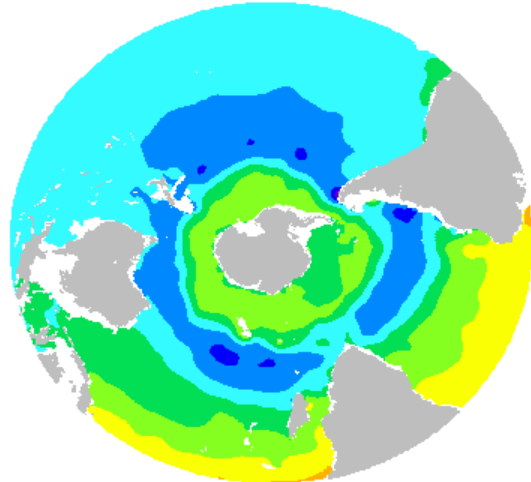
34.2 34.3 34.4 34.5 34.6 34.7 34.8 34.9 35.0 35.1 35.2



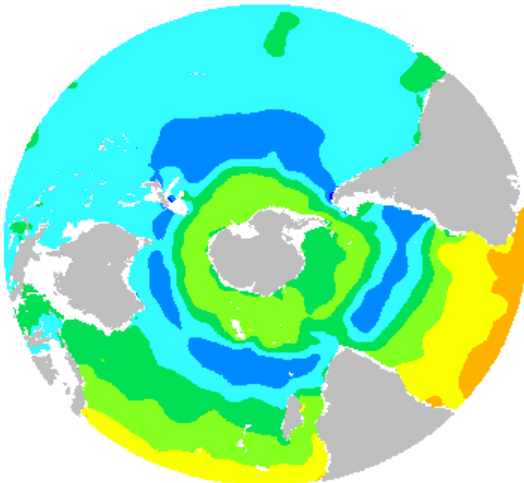
1200 m



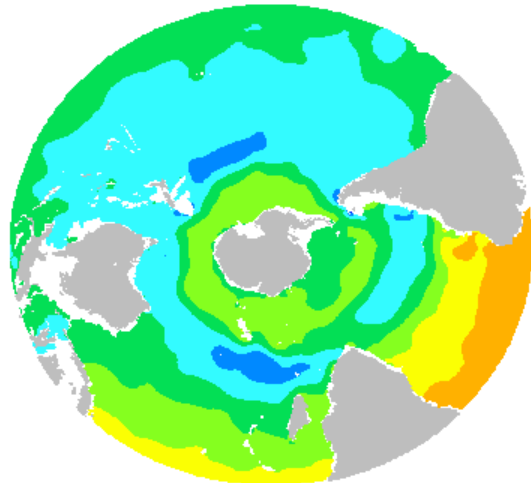
1300 m



1400 m



1500 m

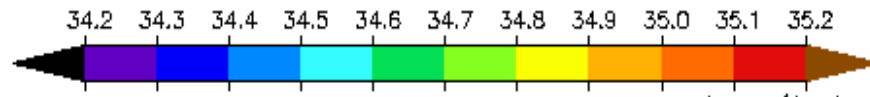




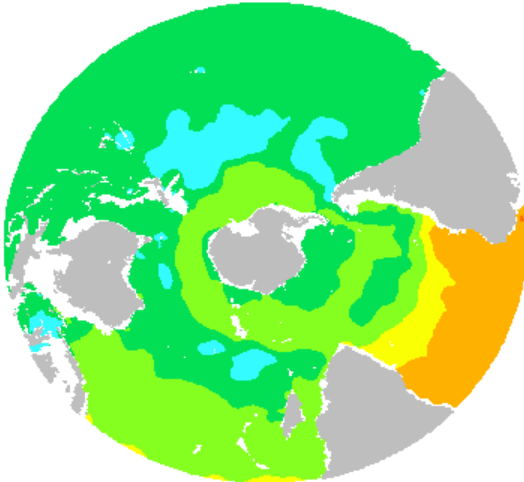
M. Steele & W. Ermold

<http://psc.apl.washington.edu/Climatology.html>

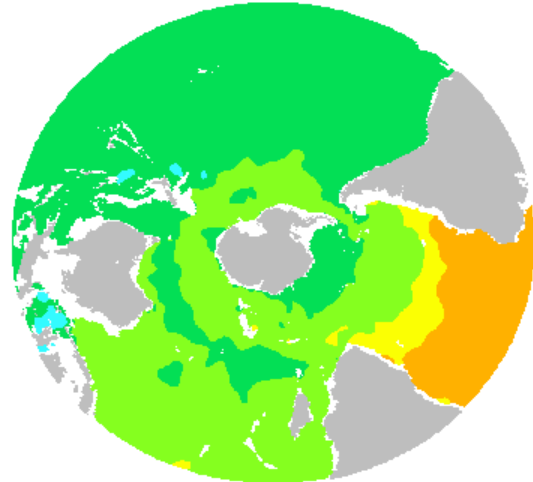
PHC 2.1 Winter Salinity



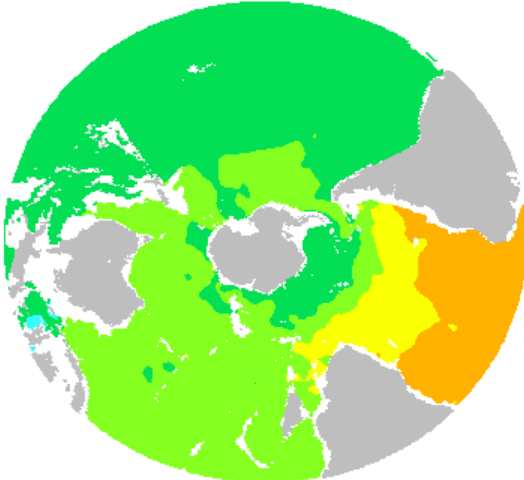
1750 m



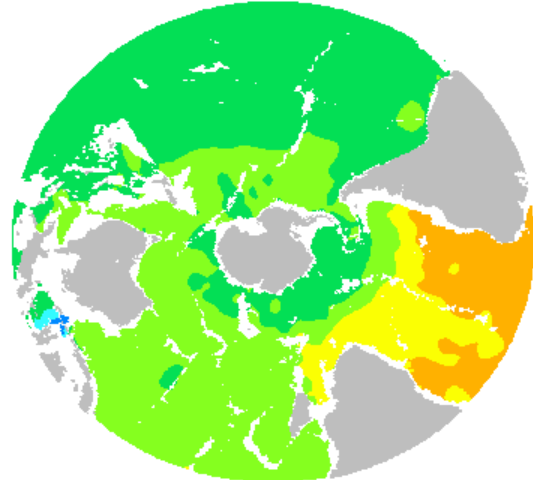
2000 m



2500 m



3000 m

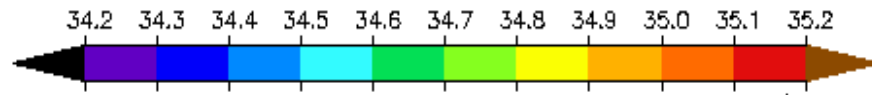




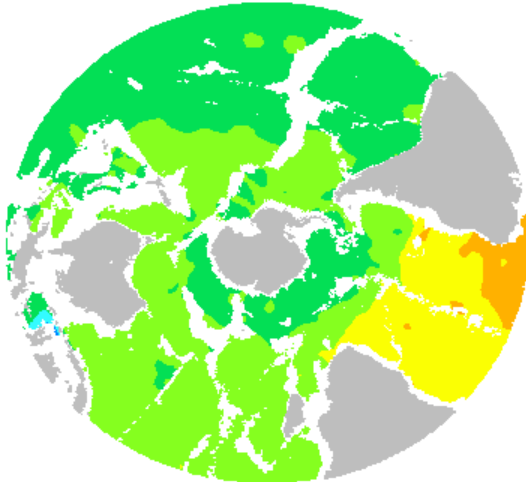
M. Steele & W. Ermold

<http://psc.apl.washington.edu/Climatology.html>

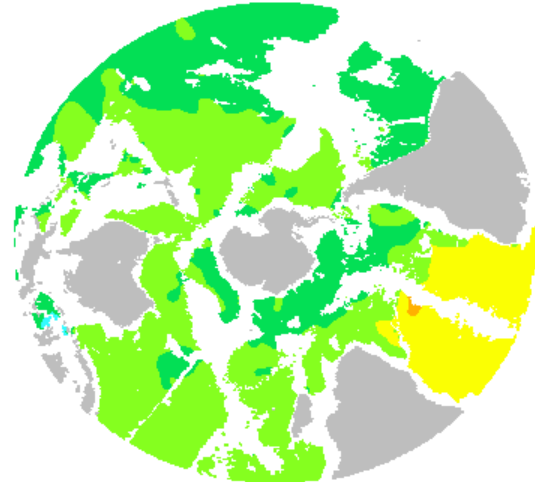
PHC 2.1 Winter Salinity



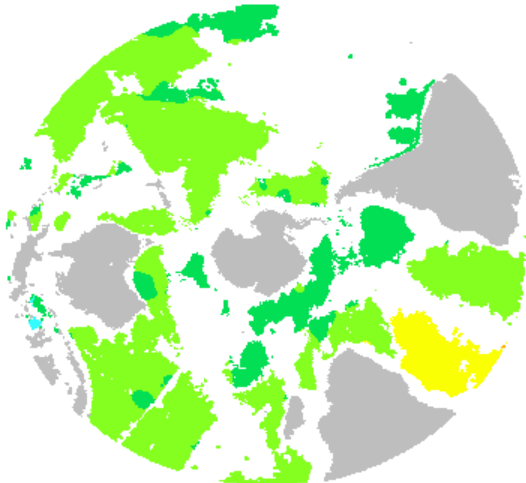
3500 m



4000 m



4500 m



5000 m

